

How to make a Visual Style for Windows Vista

Getting Started

1. Download and Install The uxTheme Patch from

<http://anti-tgtsoft.com/repository/uxtheme/Windows%20Vista/SP0/>

This will allow you to apply custom themes

2. Download and Install my Theme Template from

<http://www.mediafire.com/?35zbnvynbnm>

This will install a copy of the original aero theme and place all the required files into the correct locations with Jemaho's Improved Shellstyle, ready for modifying.

3. Download and Install Restorator 2007 from

<http://www.bome.com/Restorator/download.html>

This is your Tool for extracting and replacing resources from within the .msstyle and shellstyle.dll

4. Download and Install Alpha Image Convertor from this

<http://www.mediafire.com/?1gszvt12jxm>

This will convert your images to Alpha Aero.msstyle Compatible Images

5. Buy and Install a Paintshop Program

*This will be your main Image editing software, I recommend Adobe Photoshop CS3
Or Corel PaintShop Pro XI*

Naming Your Theme Files

If you have installed my Theme Template, Navigate to **C:\Windows\Resources\Themes**.

You will need to rename the following files to the name you wish to call your theme.

I recommend you name all the files the same.

- Template.Theme
- Template Folder
- Template.msstyle (*Located within the Template folder*)
- Template.msstyle.mui (*Located within Template folder/en-US*)

Editing Your Theme File

1. Navigate to **C:Windows\Resources\Themes**.
2. Right Click on your Theme file and select **Open with Notepad**

Here you will see many changes you can make to you theme,

For Example: Cursors, Wallpaper, Title bar Text Colours, Padded Border Width (frame width)

I have High-lighted only the **IMPORTANT** parts that you need to Edit

Display Name, Visual Style Location, Wallpaper Location

```
; Copyright © Microsoft Corp. 1995-2001
```

```
[Theme]
```

```
DisplayName= Template Theme
```

```
; My Computer
```

```
[CLSID\{20D04FE0-3AEA-1069-A2D8-08002B30309D}\DefaultIcon]
```

```
DefaultValue=%SystemRoot%\System32\imageres.dll,-109
```

```
; My Documents
```

```
[CLSID\{450D8FBA-AD25-11D0-98A8-0800361B1103}\DefaultIcon]
```

```
DefaultValue=%WinDir%\SYSTEM32\mydocs.dll,0
```

```
; My Network Places - SHIDL_MYNETWORK
```

```
[CLSID\{208D2C60-3AEA-1069-A2D7-08002B30309D}\DefaultIcon]
```

```
DefaultValue=%WinDir%\SYSTEM32\imageres.dll,-25
```

```
; Recycle Bin
```

```
[CLSID\{645FF040-5081-101B-9F08-00AA002F954E}\DefaultIcon]
```

```
full=%SystemRoot%\System32\imageres.dll,-54
```

```
empty=%SystemRoot%\System32\imageres.dll,-55
```

```
[Control Panel\Colors]
```

```
ActiveTitle=153 180 209
```

```
Background=0 0 0
```

```
Hilight=51 153 255
```

```
HilightText=255 255 255
```

```
TitleText=0 0 0
```

```
Window=255 255 255
```

```
WindowText=0 0 0
```

```
Scrollbar=200 200 200
```

```
InactiveTitle=191 205 219
```

```
Menu=240 240 240
```

```
WindowFrame=100 100 100
```

```
MenuText=0 0 0
```

```
ActiveBorder=180 180 180
```

```
InactiveBorder=244 247 252
```

```
AppWorkspace=171 171 171
```

```
ButtonFace=240 240 240
```

```
ButtonShadow=160 160 160
```

```
GrayText=128 128 128
```

```
ButtonText=0 0 0
```

```
InactiveTitleText=67 78 84
```

```
ButtonHilight=255 255 255
```

```
ButtonDkShadow=105 105 105
```

```
ButtonLight=227 227 227
```

```
InfoText=0 0 0
```

```
InfoWindow=255 255 225
```

```
GradientActiveTitle=185 209 234
```

```
GradientInactiveTitle=215 228 242
```

```
ButtonAlternateFace=0 0 0
```

```
HotTrackingColor=0 102 204
```

```
MenuHilight=51 153 255
```

```
MenuBar=240 240 240
```

```

[Control Panel\Cursors]
Arrow=%SystemRoot%\cursors\aero_arrow.cur
Help=%SystemRoot%\cursors\aero_helpsel.cur
AppStarting=%SystemRoot%\cursors\aero_working.ani
Wait=%SystemRoot%\cursors\aero_busy.ani
NWPen=%SystemRoot%\cursors\aero_pen.cur
No=%SystemRoot%\cursors\aero_unavail.cur
SizeNS=%SystemRoot%\cursors\aero_ns.cur
SizeWE=%SystemRoot%\cursors\aero_ew.cur
Crosshair=
IBeam=
SizeNWSE=%SystemRoot%\cursors\aero_nwse.cur
SizeNESW=%SystemRoot%\cursors\aero_nesw.cur
SizeAll=%SystemRoot%\cursors\aero_move.cur
UpArrow=%SystemRoot%\cursors\aero_up.cur
DefaultValue=Windows Aero
Hand=%SystemRoot%\cursors\aero_link.cur
Link=

[Control Panel\Desktop]
Wallpaper=%SystemRoot%\resources\themes\Template\Wallpaper.jpg
TileWallpaper=0
WallpaperStyle=2
Pattern=
ScreenSaveActive=0

[Control Panel\Desktop\WindowMetrics]

[Metrics]
IconMetrics=76 0 0 0 75 0 0 0 75 0 0 0 1 0 0 0 244 255 255 255 0 0 0 0 0 0 0 0 0 0 0 144 1 0 0 0 0 1 0 0 5 0 83 101 103 111 101 32 85 73 0 0 0
0 0 0 0 0 0 0 0 0 0 0 0 0 0 0 0 0 0 0 0 0 0 0 0 0 0 0 0 0 144 1 0 0 0 0 1 0 0 5 0 83 101 103
NonclientMetrics=84 1 0 0 1 0 0 0 17 0 0 0 17 0 0 0 19 0 0 0 19 0 0 0 244 255 255 255 0 0 0 0 0 0 0 0 0 0 0 144 1 0 0 0 0 1 0 0 5 0 83 101 103
111 101 32 85 73 0 0 0 0 0 0 0 0 0 0 0 0 0 0 0 0 0 0 0 0 0 0 0 0 0 0 144 1 0 0 0 0 1 0 0 5 0
83 101 103 111 101 32 85 73 0 0 0 0 0 0 0 0 0 0 0 0 0 0 0 0 0 0 0 0 0 0 0 19 0 0 0 244 255 255 255 0 0 0 0 0 0 0 0 0 0 0 0 144 1 0 0 0 0
0 1 0 0 5 0 83 101 103 111 101 32 85 73 0 0 0 0 0 0 0 0 0 0 0 0 0 0 0 0 0 0 0 0 244 255 255 255 0 0 0 0 0 0 0 0 0 0 0 0 144 1 0 0 0 0 1 0 0
5 0 83 101 103 111 101 32 85 73 0 0 0 0 0 0 0 0 0 0 0 0 0 0 0 0 0 0 0 0 0 0 0 0 244 255 255 255 0 0 0 0 0 0 0 0 0 0 0 0 144 1 0 0 0 0 1 0 0 5 0 83
101 103 111 101 32 85 73 0 0 0 0 0 0 0 0 0 0 0 0 0 0 0 0 0 0 0 0 0 0 0 0 0 0 244 255 255 255 0 0 0 0 0 0 0 0 0 0 0 0 144 1 0 0 0 0 1 0 0 5 0 83
PaddedBorderWidth=4

[boot]
SCRNSAVE.EXE=%WinDir%\System32\logon.scr

[MasterThemeSelector]
MTSM=DABJDKT
ThemeColorBPP=4

[VisualStyles]
Path=%SystemRoot%\resources\Themes\Template\Template.msstyles
ColorStyle=NormalColor
Size=NormalSize
ColorizationColor=0X45409EFE

```

Now you have edited those 3 important parts, **Save and Exit the file.**

Creating your Style (Editing the .msstyle and shellstyle)

- Navigate to **C:Windows\Resources\Themes**.
- Inside your themes folder right click on the .msstyle and select **Open with Restorator 2007**

Now you will see the contents of the .msstyle

All of the images are located in the **IMAGE** Folder and one is located in the **STREAM** Folder.

*(See the Next section “**Resource Locations**” for a rough guide to show you what images to edit)*

- Extract the Individual images (or the entire image folder)
Drag and Drop to your desktop
- Edit the images in your Paintshop program
*If your Paintshop program does not make Alpha aero compatible images then this is when you need to use the **Alpha Image convertor**.*
If your image is not Alpha compatible then you will notice a horrible white background when applied to your theme
- Replace the Images back into the folder they came from
(e.g. .msstyle\Image) by using Restorator 2007 to drag and drop
- Save the .msstyle in Restorator 2007
- Apply your theme to see changes
*Control Panel\Personalization\Theme **Apply***

Repeat the Above Process for the **Shellstyle.dll**

*(Windows\Resources\Themes**Your Theme Folder**\Shell\NormalColor\Shellstyle.dll)*

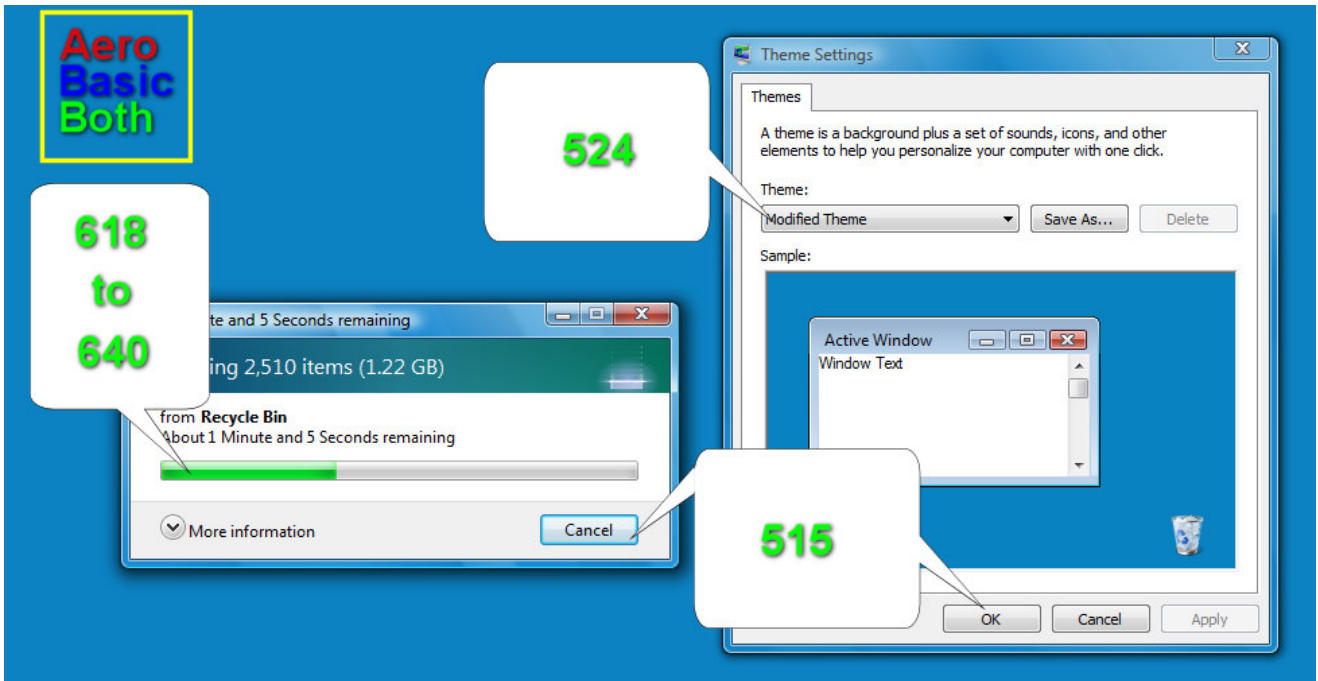
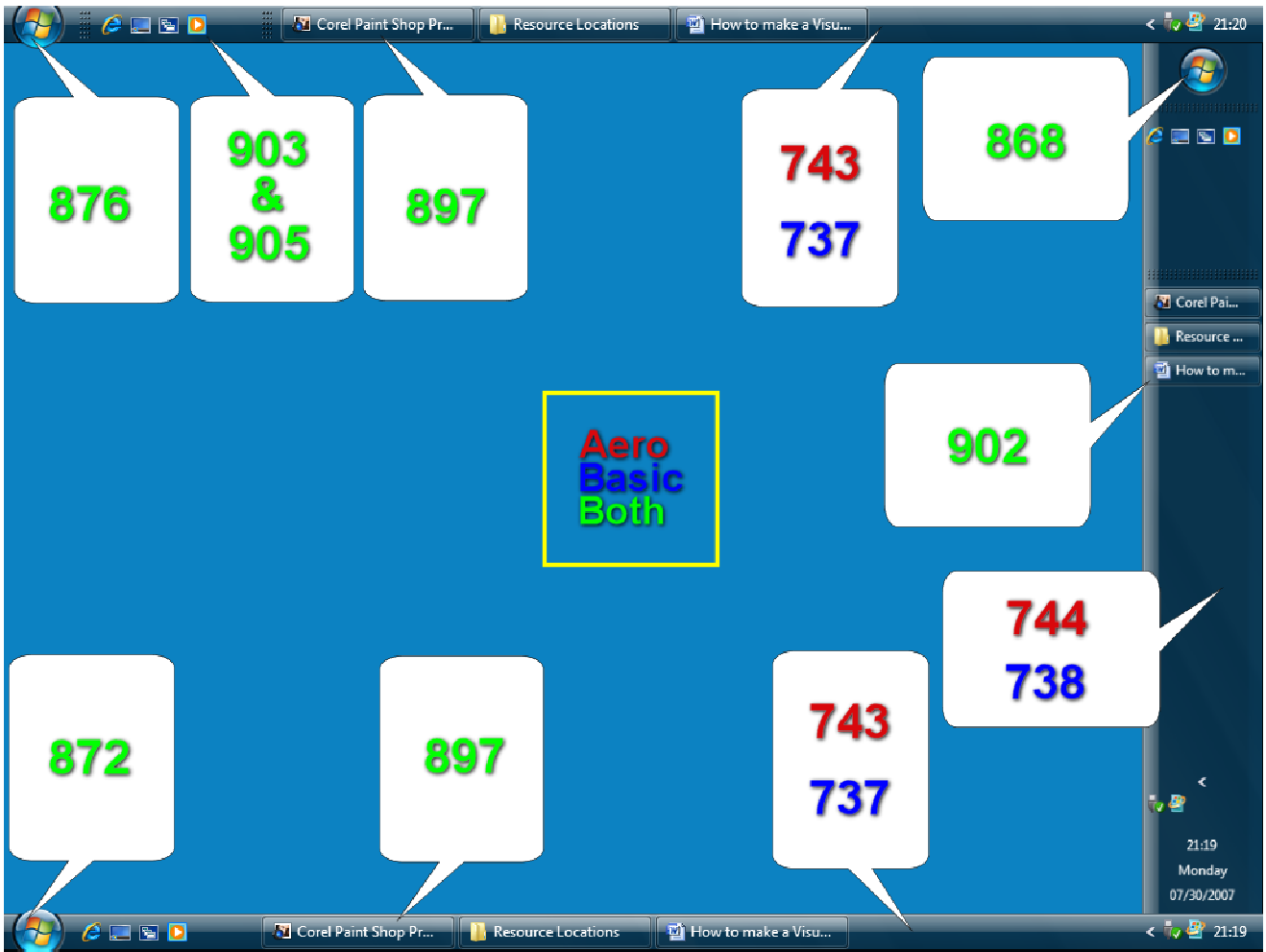
Resource Locations

This is just a rough guide of some of the Common Images you can edit to make your style, there are Hundreds of images you can edit and most of them are used for both aero and basic.

You can also try my **.msstyle Resource Finder**. to help you narrow down the search to the nearest 40 images. <http://www.deviantart.com/deviation/61020262/>

KEY: **Aero**, **Basic**, **Both**





**Aero
Basic
Both**

Stream

**653 to
656**

527

Stream

**813,839
Max 830**

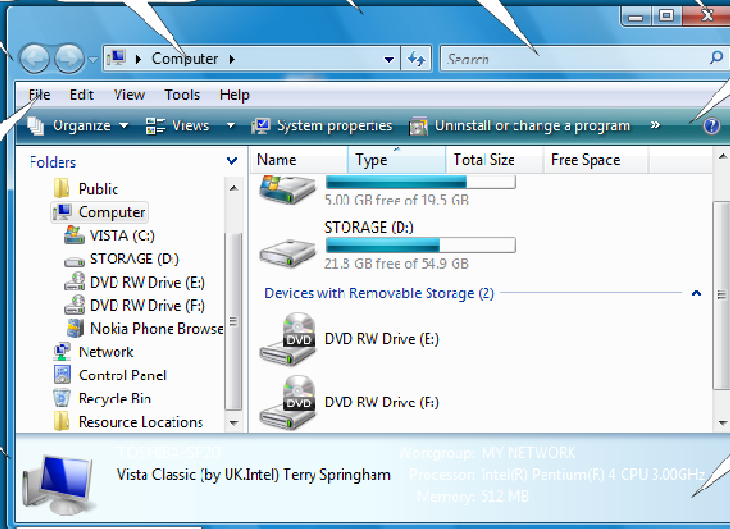
**750
to
757**

Stream

**822
to
846**

**641
&
851**

**Stream
820 & 848**



**Shellstyle 200
.mststyle 775**

Stream

821 & 848

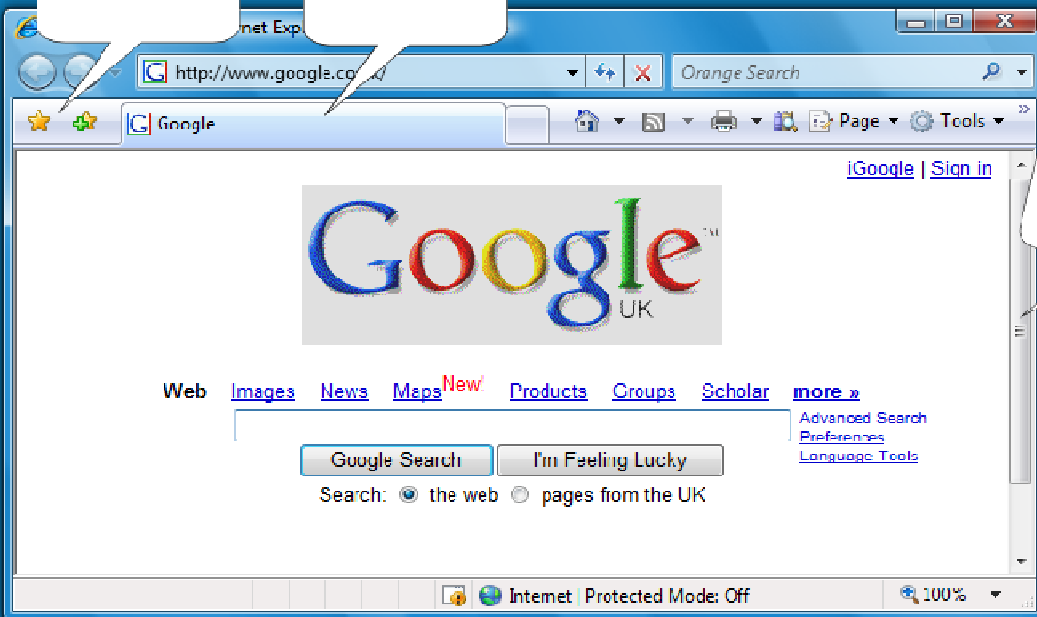
**Shellstyle
300 to 800**

**Stream
819 & 847**

648

734

**Aero
Basic
Both**



**666
to
674**

Advanced Styling

For more advanced Styling see my other tutorials

- Vista Hex-Editing - for Text colours, Margins and much more.
<http://www.deviantart.com/deviation/60297439/>
- Vista Font Change - for changing Font types.
<http://www.deviantart.com/deviation/60759075/>



<http://ukintel.deviantart.com/gallery/>